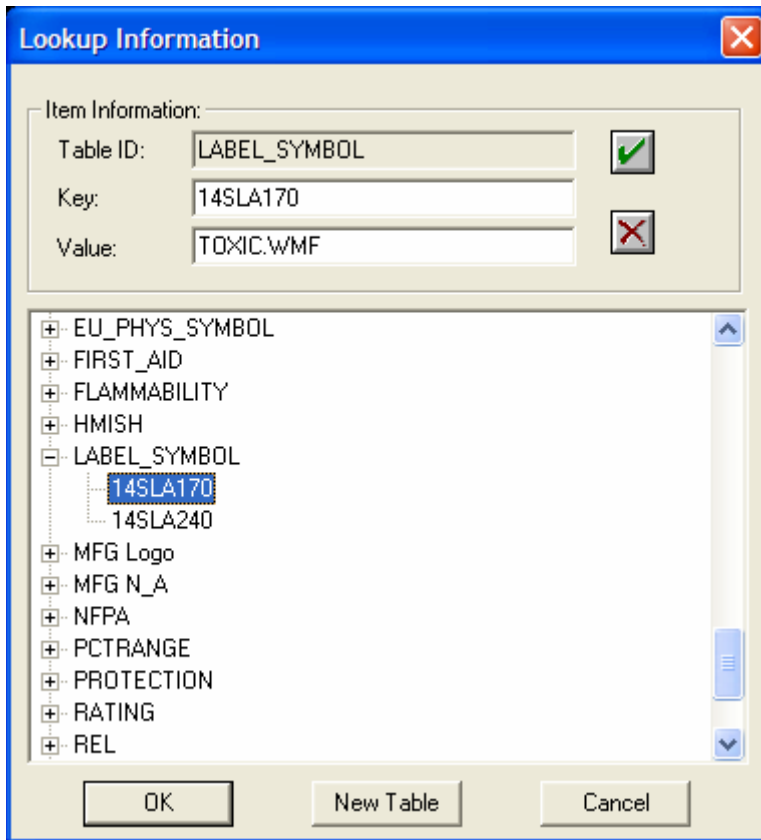


Instructions on how to add a Graphic to a Label

Below is an example on how to add a graphic to a label. In this example we are adding a transportation graphic to the label.

To start with you will need to create a range table that cross references the standard phrase you are attempting to print with the name of the graphic you will print from publisher. Below is an example LABEL_SYMBOL.



Instructions on how to add a Graphic to a Label

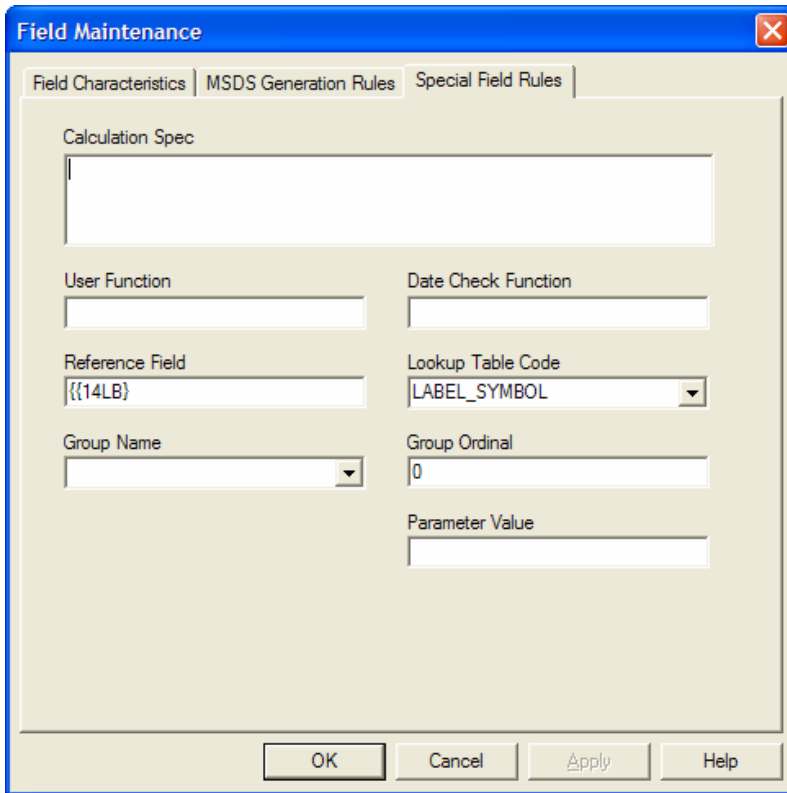
You will then need to create a field rule that outputs the text value in a field and uses the range table you just created. Below field rule 14DOT_LB is such an example.

The screenshot shows the 'Field Maintenance' dialog box with the 'Field Characteristics' tab selected. The 'Field ID' is '14DOT_LB'. The 'Description' is 'DOT Symbol for Label'. The 'Field Type' is 'Alphanumeric'. The 'Width' is '0', 'Decimals' is '0', and 'Validation Function' is empty. The 'Entry Instructions' field is empty. The 'OK', 'Cancel', 'Apply', and 'Help' buttons are at the bottom.

The screenshot shows the 'Field Maintenance' dialog box with the 'Special Field Rules' tab selected. The 'Source Level' is 'Product-Only'. The 'Inclusion Percentages' are 'All'. The 'Display Rule' is 'All'. The 'Compound Numerics -- Tables for Field Codes' section shows '1st Descriptor' as empty, '2nd Descriptor' as empty, 'Relative' as 'REL', and 'Units' as 'UOM'. The 'Compound Numeric -- Default values for field' section shows '1st Descriptor' as empty, '2nd Descriptor' as empty, 'Relative' as empty, 'Min' as empty, 'Max' as empty, and 'Units' as empty. The 'Default Value' field is empty. The 'OK', 'Cancel', 'Apply', and 'Help' buttons are at the bottom.

Instructions on how to add a Graphic to a Label

As you see in the picture below we are referencing a field that generated a standard phrase and the result will be the result of the Range Table lookup.

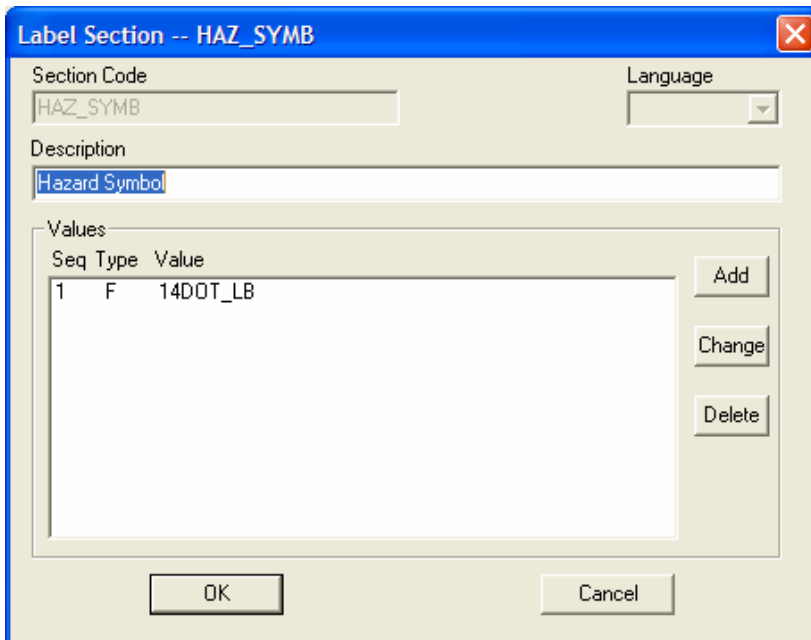


The 'Field Maintenance' dialog box is shown with the 'Special Field Rules' tab selected. It contains several input fields and dropdown menus for configuring a field rule.

Field	Value
Calculation Spec	
User Function	
Date Check Function	
Reference Field	{{14LB}}
Lookup Table Code	LABEL_SYMBOL
Group Name	
Group Ordinal	0
Parameter Value	

Buttons at the bottom: OK, Cancel, Apply, Help.

Once the field has been defined the next step is to create a label section that references that field.



The 'Label Section -- HAZ_SYMB' dialog box is shown. It contains a 'Section Code' field, a 'Language' dropdown, a 'Description' field, and a 'Values' table.

Section Code	Language
HAZ_SYMB	

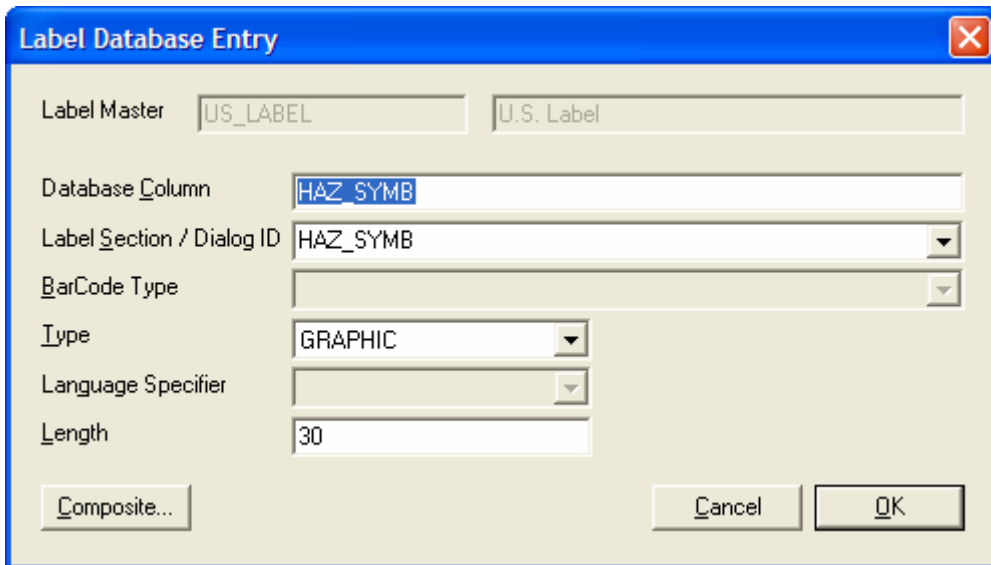
Description: Hazard Symbol

Seq	Type	Value
1	F	14DOT_LB

Buttons: Add, Change, Delete, OK, Cancel.

Instructions on how to add a Graphic to a Label

Now that you have created the label section that references that field you can now add that label section into the Label System table. So it can be used on the Label. Be sure to define the field as a Graphic Field. This will tell the label print that an image will print as a result of this field value.



Label Database Entry

Label Master US_LABEL U.S. Label

Database Column HAZ_SYMB

Label Section / Dialog ID HAZ_SYMB

BarCode Type

Type GRAPHIC

Language Specifier

Length 30

Composite... Cancel OK

Once all of these steps have been done then you must regenerate and approve the Chemical label records for the chemicals where there are graphics before they are available to print.

You will also need to put the graphics you are attempting to print (TOXIC.WMF) in the example above in the Graphics folder in the Hazox Client directory Example: C:\EMS32\Graphics. So you will need to take the original graphic or save the phrase into a graphic file to add to the directory. This will need to be added to the Graphics directory of every machine that is running the print client or prints a label.

Instructions on how to add a Graphic to a Label

The last step is to update the Label Format with the new field for the Graphic.

Below is an example of the HAZ_SYMB label field on the label with a Diamond Orientation.

The new label format must also be available on all the PC's which print Labels. Typically found in the C:\EMS32\LABELS directory

