

Adding Dynamic Logo's and Addresses to your Documents

Overview:

This document shows you how to configure Hazox to add a dynamic logo and address to your document template.

This functionality uses the Manufacturer name value in the product record to assign the Address and Logo to your MSDS. This allows you to have the same MSDS configuration to produce different MSDS's with Logo's and Addressed bases on different stock number.

Setup:

In order to use this functionality you must have the following range tables defined.

MFG N_A
MFG Logo

These range tables need to be an exact match, alpha numeric range table with the following entries.

Key: The value in the key must match exactly to the Manufacturer Name assigned to the stock record.

Value: A standard phrase in the following format "{PHRASE:HAZOXADDR}" that contains the Address or Logo you want to appear on the MSDS.

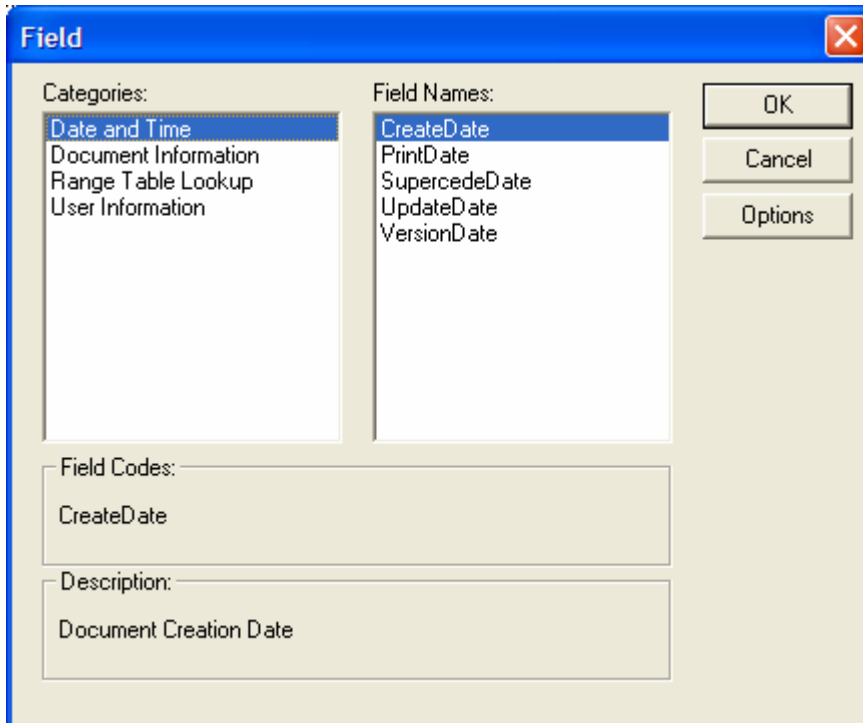
The screenshot shows a 'Lookup Information' dialog box with the following fields and options:

- Item Information:**
 - Table ID: MFG Logo (checked)
 - Key: HAZOX
 - Value: {PHRASE:HAZOX} (unchecked)
- Table List:**
 - EU_PHYS_SYMBOL
 - FIRST_AID
 - FLAMMABILITY
 - HMISH
 - LABEL_SYMBOL
 - MFG Logo (selected)
 - HAZOX (highlighted)
 - MFG N_A
 - NFPA
 - PCTRANGE
 - PROTECTION
 - RATING
 - REL
 - SAFETY PHRASES
- Buttons:** OK, New Table, Cancel

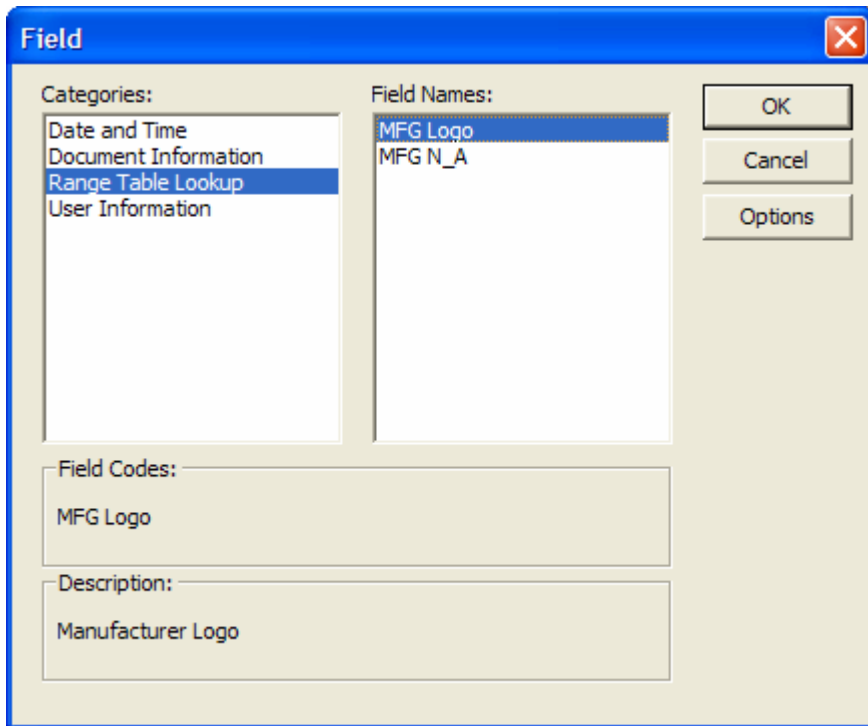
Configuring the MSDS:

To add these values to the MSDS Template, open the template.

Then go to the Insert (on version 3.4.1) or Special (on version 4.0) menu and select the Static Field (version 3.4.1) or the Field (version 4.0) option. You will see the following dialog.



From that Dialog, select the Range Table Lookup option to see the Manufacturer Address and Manufacture Logo options.



Choose the appropriate value and location on the MSDS to place these items and save the Template.

You will see the following lines added to your template.

Version 3.4.1:

For Logo: **{FIELD:MFG Logo@ManufacturerName}**

For Manufacturer Name and Address:

{FIELD:MFG N_A@ManufacturerName}

Version 4.0:

For Logo: **{ REF EMSFIELD_MFG Logo "ManufacturerName" }**

For Manufacturer Name and Address:

{ REF EMSFIELD_MFG N_A "ManufacturerName" }

Results:

As a result of adding the above information to your template, when the document is resolved and printed for your product, the Manufacturer Logo and Name and Address assigned to the Manufacturer name in the Stock record will be displayed on the final document.

If no match is found in either table, then nothing is displayed. So it is not required that all Manufacturers have this configured. You can configure either Address or Logo, both are not required to implement this functionality.