



Stock Unload Export

An overview of
EMS Stock Unload Export

Table of Contents

1. Overview	3
2. Stock Unload Export	3
3. Format Definition	4
4. Format of the Selection Load File	6
5. Requirements for running the software	7
Appendix A: Screen Shots.....	8

1. Overview

At times, it may be desired to export all data associated with a particular product or group of products. The reasons may be to send this information to another business unit, or to send it to Hazox for a particular support issue.

The Stock Unload Export allows you to accomplish this with a very simple 'wizard' interface.

Limitations of the Stock Unload Export:

- Can only export to Microsoft Excel.
- Does not export supporting tables such as lookup tables.

Export Features:

- Exports Stock information, Product Names, Exploded BOM, Field Values and associated Standard Phrases, and Documents in PDF format.
- Allows the user to select the Fields to export by selecting a Field Set.
- 'Wizard' driven making it very easy to use

2. Stock Unload Export

The HAZOX Stock Unload Export function allows users to export all information related to a product. This can be useful to extract information for use in other systems or for use in resolving an issue through Hazox Support.

The features include:

- 1) Wizard interface for ease of use.
- 2) Fieldset selection to export only specific field values.
- 3) Enhanced product search functionality.

To use the function, use Product Maintenance to display a list of products to be exported. A new function has been added which allows you to finely select the specific product to be exported. To use this function, press the "Load" button the Product Search Dialog. A "File Open" dialog will display asking for an Excel file (*.xls). This file can contain product selection criteria in the first column of the first spreadsheet. The format is specified is specified in section 4.

After the grid is displayed, click File/Save. You will then be prompted for whether or not you want to use the 'Stock Unload Format'. Click 'Yes' and follow the wizard instructions.

The first wizard page asks for the name of the file for the export. The export will also place the documents in the same directory as the Excel file.

The next page allows the user to set certain options to modify the output of the spreadsheet.

The final page allows the user to select a fieldset which defines the fields to be exported. The user may optionally choose '(All)' in order to export all fields. After pressing next, the extract will run and display the progress of the process.

3. Format Definition

The spreadsheet generated by the process contains six sheets as follows:

Products:

This sheet contains the product information for all products included in the export. The columns are the following:

Column	Description
DPSTCK	Contains the Stock Number
DPMSID	Contains the Document (MSDS) ID related to this product
DPMSTM	Document ID of the Template used during document generation
DPKIT	Indicates if this product is a kit
CMCHNM	The Root Chemical Name related to this product
DPLBCD	The label code associated with this product
DPDIV	The division code that this product belongs to.

Product Names:

This sheet contains the product name information for all products included in the export. The columns are the following:

Column	Description
DNSTCK	Contains the Stock Number
DNCTID	The language code for this name/manufacture
DNPRODUCT	The language specific product name
DNMANF	The language specific manufacturer name

Chemicals:

This sheet contains the chemical information for all products, raw materials and pure substances that are part of the exploded BOM for the selected products. The columns are the following:

Column	Description
CMCHNM	The chemical name
CMCASN	The CAS number
CMCMCD	Pure/Mixture flag
CMSPGR	Specific gravity for this chemical
CMRPTH	MSDS Inclusion Percentage

Components:

This sheet contains the component information for all products, raw materials and pure substances that are part of the exploded BOM for the selected products. The component sheet represents a hierarchical view of the BOM. The columns are the following:

Column	Description
CPPCHM	The name of the parent chemical
CPCCHM	The name of the child chemical
CPPERC	The percentage of the parent that is the child
CPRELO	The relative operator
CPMINV	The minimum value
CPMAXV	The maximum value
CPUOM	The unit of measure

Fields:

This sheet contains the selected field values for all chemicals in the exploded BOM. The columns are the following:

Column	Description
CMCHNM	The chemical name
CFFLID	The field name (ID)
CFSEQ	The field value sequence number for ordering multiple values for the same field.
CFTYPE	The field value type
CFCOMP	The source of this value
CFVALU	The actual value
FMFLTP	The field type
CFMAJD	The major description for compound numerics
CFMIND	The minor description for compound numerics
CFRELO	The relative operator for compound

	numerics
CFMINV	The minimum value for compound numerics
CFMAXV	The maximum value for compound numerics
CFUOM	The Unit Of Measure for compound numerics
CFORIG	The original value of this field before being overridden.
CFDATE	The date the value was entered or generated
CFNOTE	A user entered note for this value

Phrases:

This sheet contains the phrase records for all fields of type phrase. The columns are the following:

Column	Description
SHMSID	The phrase ID
SHCTID	The language code for this phrase
SHDSL	The phrase description
SHTYPE	The phrase type RTF or Text (R/T)
SHRVLV	The phrase revision level
SHPTY	The phrase priority
SHTEXT	The text for the phrase

4. Format of the Selection Load File

The selection file is an Excel file that may contain one column. The data in the column specifies selection values for a specific column in the database. The first row defines the column name to which the selection values are applied. For example, cell A1 contains DPSTCK and cells A2-An contain stock numbers. These stock numbers are applied to the select when the OK button is pressed on the search dialog.

The following are valid column names:

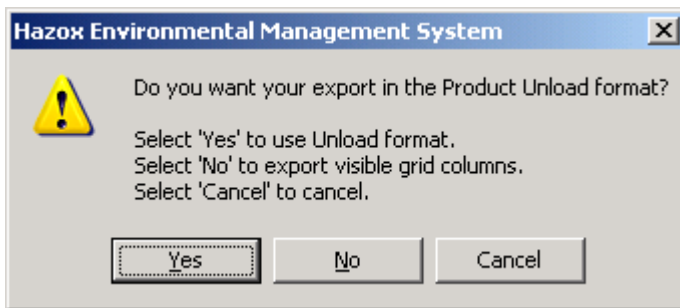
Column	Description
DPSTCK	Contains the Stock Number
DPMSID	Contains the Document (MSDS) ID related to this product
DPMSTM	Document ID of the Template used during document generation
DPKIT	Indicates if this product is a kit
DPLBCD	The label code associated with this product
DPDIV	The division code that this product belongs

	to.
DNPRODUCT_S	The language specific product name
DNMANF_S	The language specific manufacturer name

5. Requirements for running the software

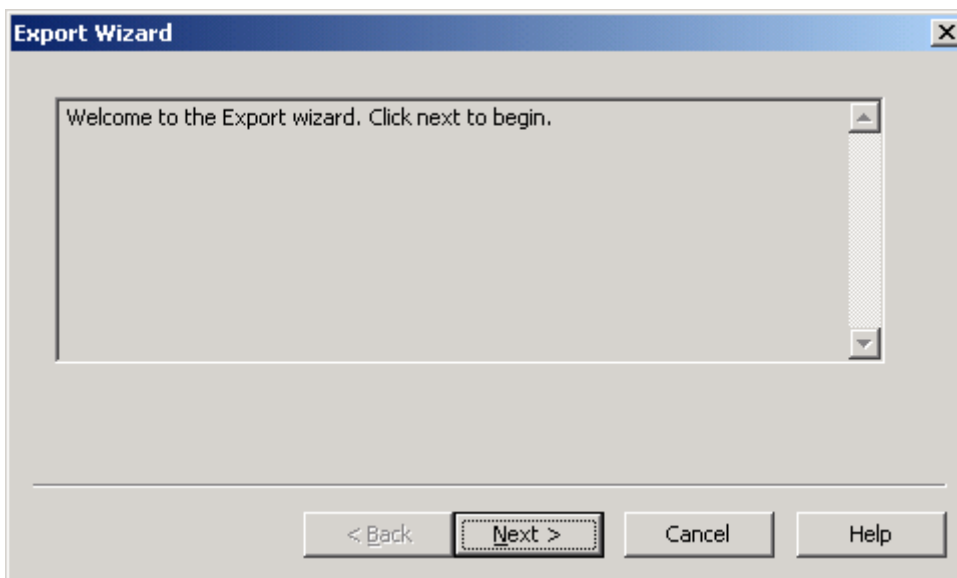
- Sufficient disk space to accommodate the spreadsheet and product related documents.
- Licensed copy of MS Excel 2000 (or greater) software is needed on the client machine.

Appendix A: Screen Shots



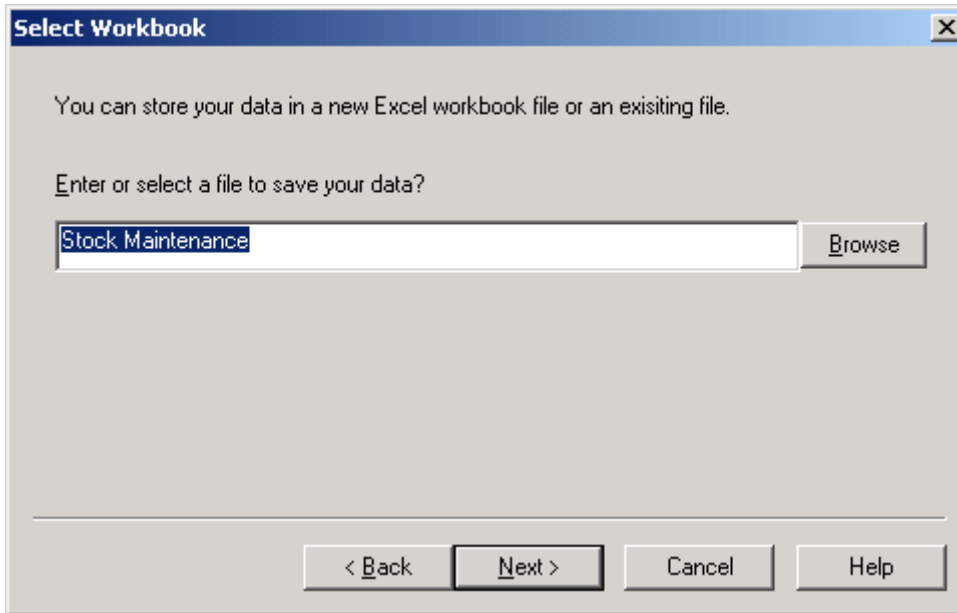
Export Type Dialog

This is presented to the user after clicking File/Save. Clicking 'Yes' will start the 'Stock Unload Export' wizard.



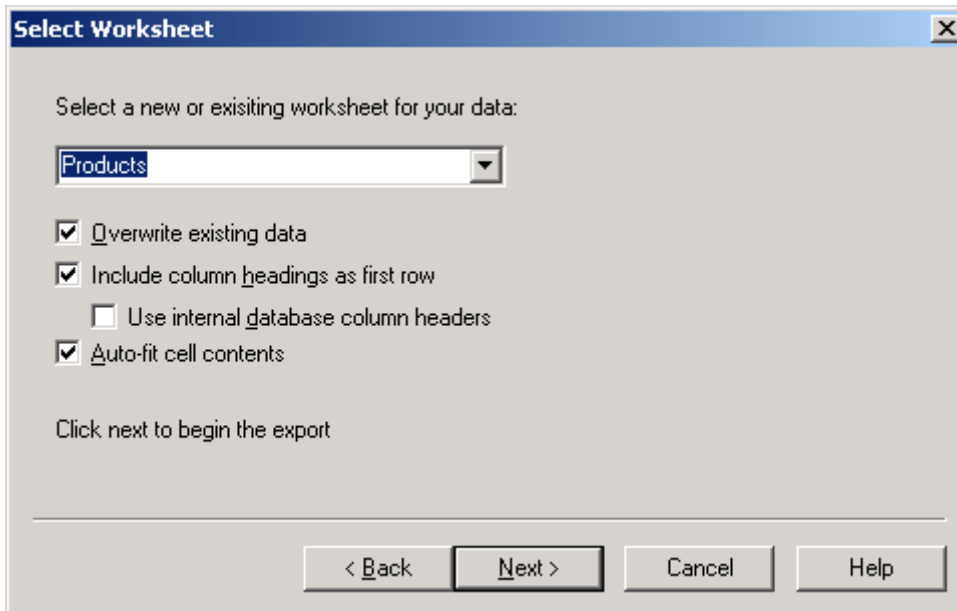
Welcome screen

This is the first wizard screen.



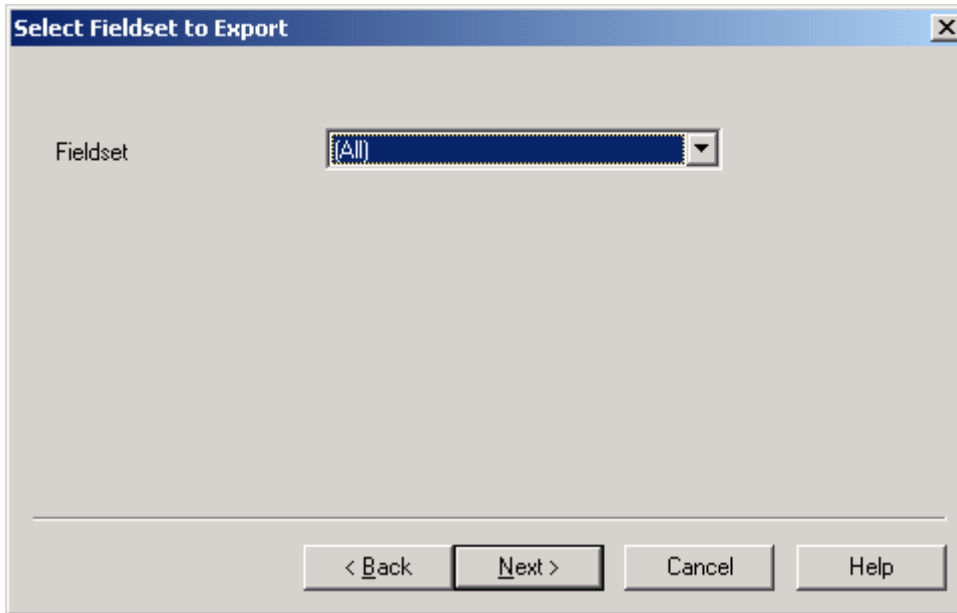
Select Workbook screen

This screen allows the user to specify a file and directory in which to place the export spreadsheet and documents.



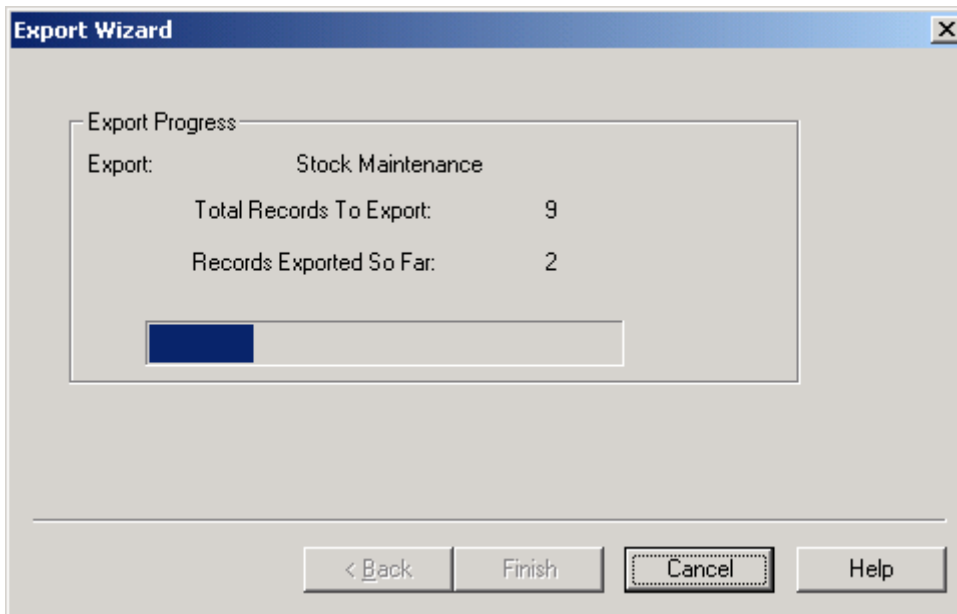
Select Worksheet screen

This screen allows the user to set output options.



Select Fieldset screen

This screen allows the user to select a fieldset which specifies the fields to export.



Progress screen

This screen displays the progress of the export. The user can press 'Cancel' at any time to discontinue the export.

